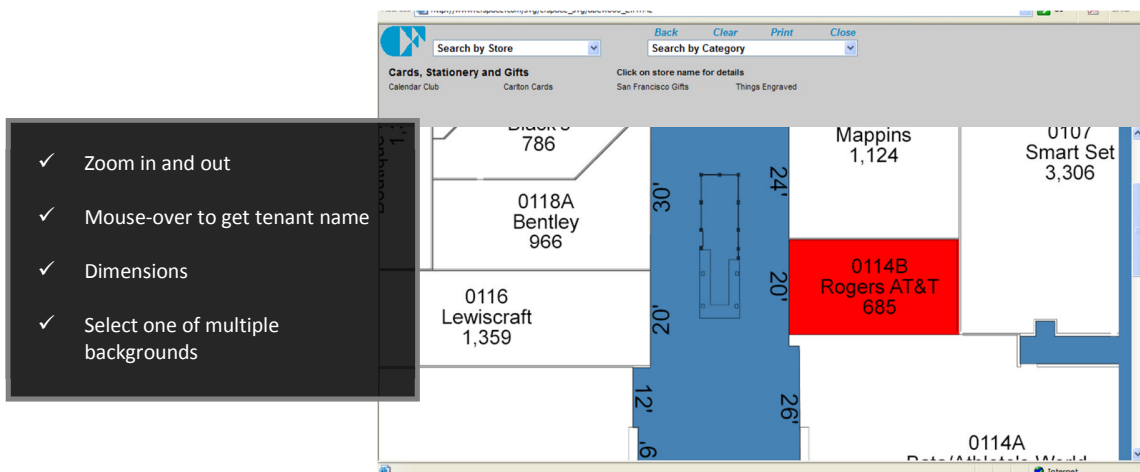
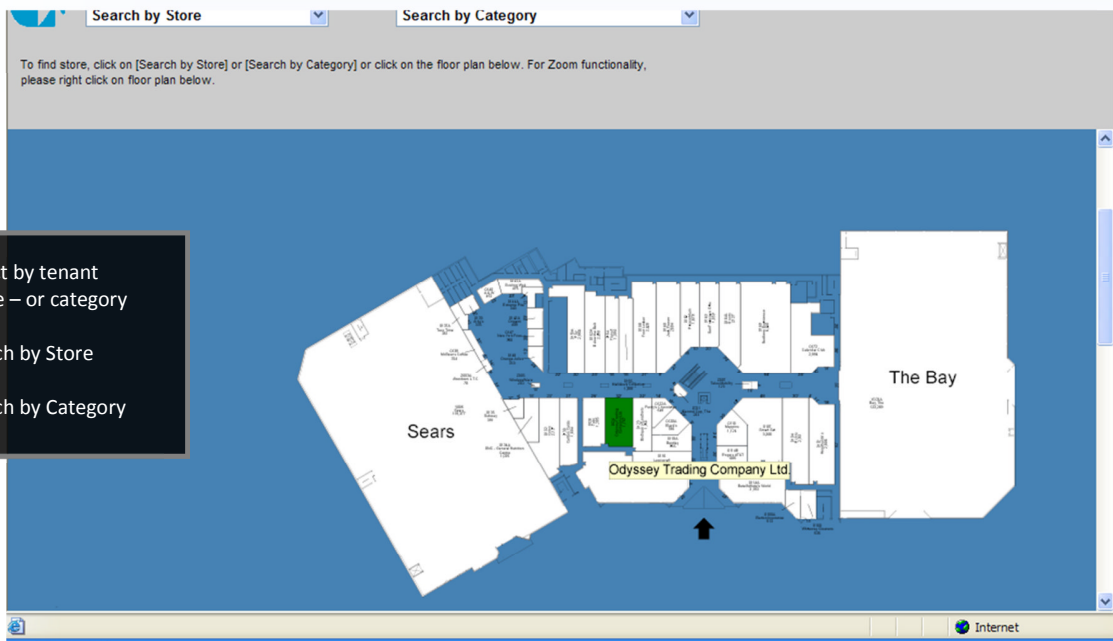


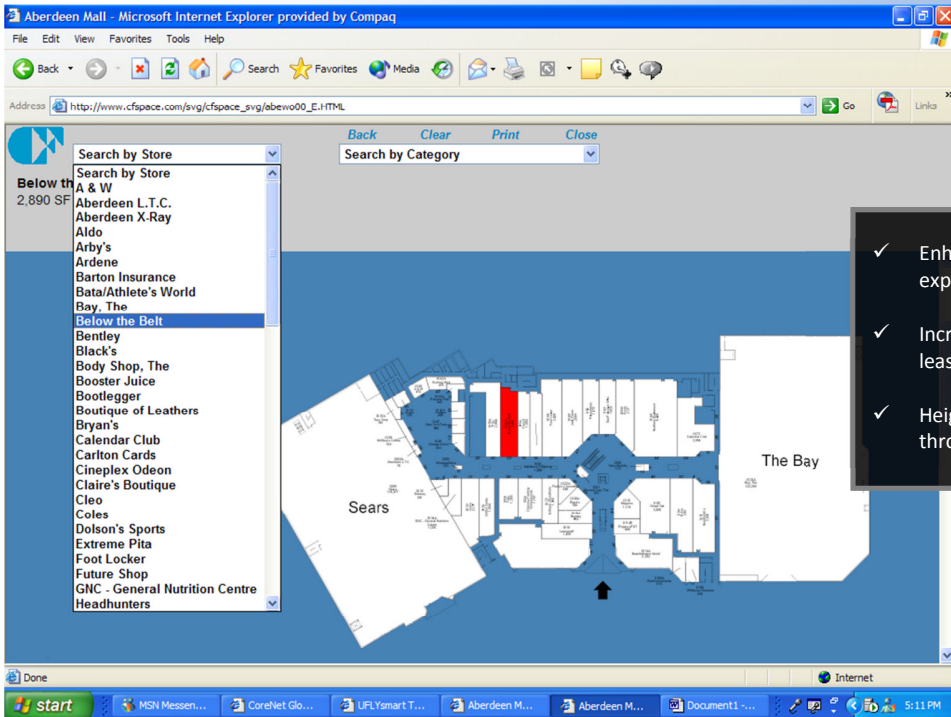
SVGWeb

- ✓ No training required.
- ✓ Multi-lingual.
- ✓ Printable.

Creating Web Content from Propidex

The Propidex SVGWeb module is our publication engine for preparing interactive floor-plans on the web for external audiences. Using the SVGWeb module, you can create SVG and PNG format floor-plans so that shopper and broker sites can have up-to-date, interactive, “zoomable” floor-plan graphics without exposing any sensitive information, and without any manual “re-working” and in a very short period of time.

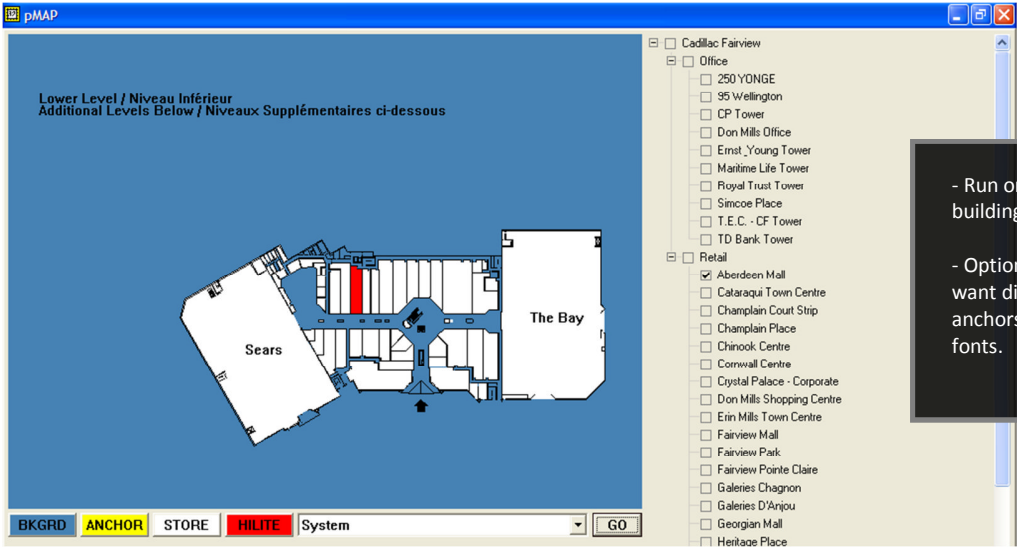




- ✓ Enhance prospective tenant experience through visual floor-plans
- ✓ Increase revenue through quick leasing turnover
- ✓ Heighten productivity and efficiency throughout the organization

How SVGWeb Works

1. Within Propidex, the data and CAD drawings are being refreshed on an on-going basis to meet the requirements of leasing and asset management.
2. With this module you use those same drawings (that you know are correct and up-to-date) and integrate them onto your external websites.
3. The SVG Module then creates Scalable Vector Graphics (interactive, zoomable pictures) of the floor-plans. It can also create PNG files for the less sophisticated web browser.



- Run one building at a time or all the buildings at the same time.
- Options to specify what colors you want displayed for the background, anchors, normal stores (offices), and fonts.